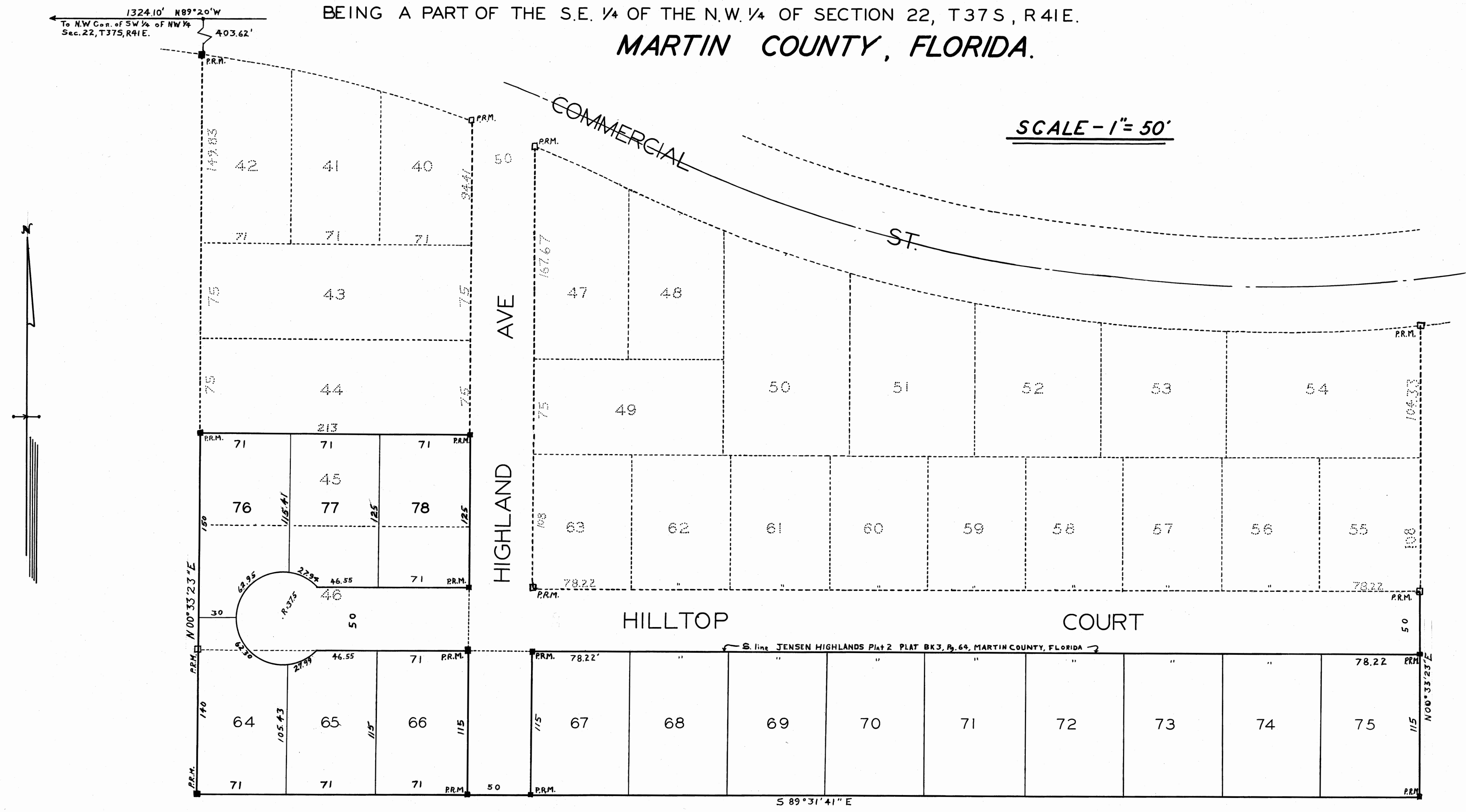


A REVISED AND AMMENDED PLAT OF PLAT NO.-2 OF THE JENSEN HIGHLANDS

BEING A PART OF THE S.E. 1/4 OF THE N.W. 1/4 OF SECTION 22, T37 S, R41 E.
MARTIN COUNTY, FLORIDA.

THIS PLAT FILED FOR RECORD AT
THIS 28th DAY OF May, A.D. 1958 AND
RECORDED IN PLAT BOOK 3 PAGE 96
IN THE OFFICE OF THE CLERK OF THE
CIRCUIT COURT MARTIN COUNTY FLORIDA
CLERK OF THE CIRCUIT COURT
Joseph Pierce
FILE NO. 63196 *by J. H. Brown, C.C.*



DEDICATION

STATE OF FLORIDA SS
 COUNTY OF MARTIN
 KNOW ALL MEN BY THESE PRESENTS, THAT EDWARD H. YERG & GLADYS B. YERG, HIS WIFE, ERIC ANDERSON & THERESA ANDERSON, HIS WIFE, W. J. WEISS & DOROTHY E. WEISS, HIS WIFE, HAVE CAUSED THE ATTACHED PLAT TO BE MADE AND THE LAND SUBDIVIDED AS SHOWN HEREON AND HEREBY AFFIRM THAT WE ARE THE OWNERS IN FEE SIMPLE OF THE LAND SUBDIVIDED AND HEREBY DEDICATE, TO THE PERPETUAL USE OF THE PUBLIC, THE ROADS SHOWN HEREON, RESERVING HOWEVER UNTO OURSELVES, SUCCESSORS, ASSIGNS, OR LEGAL REPRESENTATIVES, THE REVERSION, OR REVERSIONS OF THE ROADS WHENEVER ABANDONED BY THE PUBLIC OR DISCONTINUED BY LAW.
 SIGNED AND SEALED IN THE PRESENTS OF,

Randall P. Fisher
 WITNESS
James E. Brock
 WITNESS
 BY *H. J. Hines* AS ATTORNEY
 IN FACT FOR THE ABOVE NAMED PERSONS.
H. J. Hines, INDIVIDUALLY
 SEAL

APPROVED
 BOARD OF COUNTY COMMISSIONERS
 BY *W. J. Arnold* VICE
 VICE-CHAIRMAN
 DATE May 27, 1958

ACKNOWLEDGEMENT

STATE OF FLORIDA SS
 COUNTY OF MARTIN
 BEFORE ME THIS DAY PERSONALLY APPEARED W. J. WEISS, TO ME WELL KNOWN TO BE THE EXECUTOR OF THE FOREGOING INSTRUMENT AND WHO ACKNOWLEDGED TO AND BEFORE ME THAT HE EXECUTED THE DEDICATION HEREON SHOWN FOR THE USES AND PURPOSES THEREIN STATED.
 WITNESS MY HAND AND OFFICAL SEAL THIS 17th DAY OF May, A.D., 1958, AT Stuart FLORIDA.
J. P. Hout
 NOTARY PUBLIC
 MY COMMISSION EXPIRES April 26, 1960

CERTIFICATE

STATE OF FLORIDA SS
 COUNTY OF MARTIN
 I HEREBY CERTIFY THAT THE LAND SHOWN HEREON WAS SURVEYED AND PLATTED UNDER MY DIRECTION AND THAT THE ATTACHED PLAT IS A TRUE AND CORRECT REPRESENTATION THEREOF, TO THE BEST OF MY KNOWLEDGE AND BELIEF AND THAT PERMANENT REFERENCE MONUMENTS WERE PLACED AS PRESCRIBED BY LAW.
James E. Brock
 REGISTERED LAND SURVEYOR
 FLORIDA CERTIFICATE NO. 288
 SUBSCRIBED AND SWORN TO BEFORE ME THIS 17 DAY OF May, A.D., 1958, AT Stuart FLORIDA.
J. P. Hout
 NOTARY PUBLIC
 MY COMMISSION EXPIRES April 26, 1960

STAFFORD & BROCK
 ENGINEERS
 SURVEYORS
 STUART FLORIDA
 DWG. BY REB DATE May 12, 1958